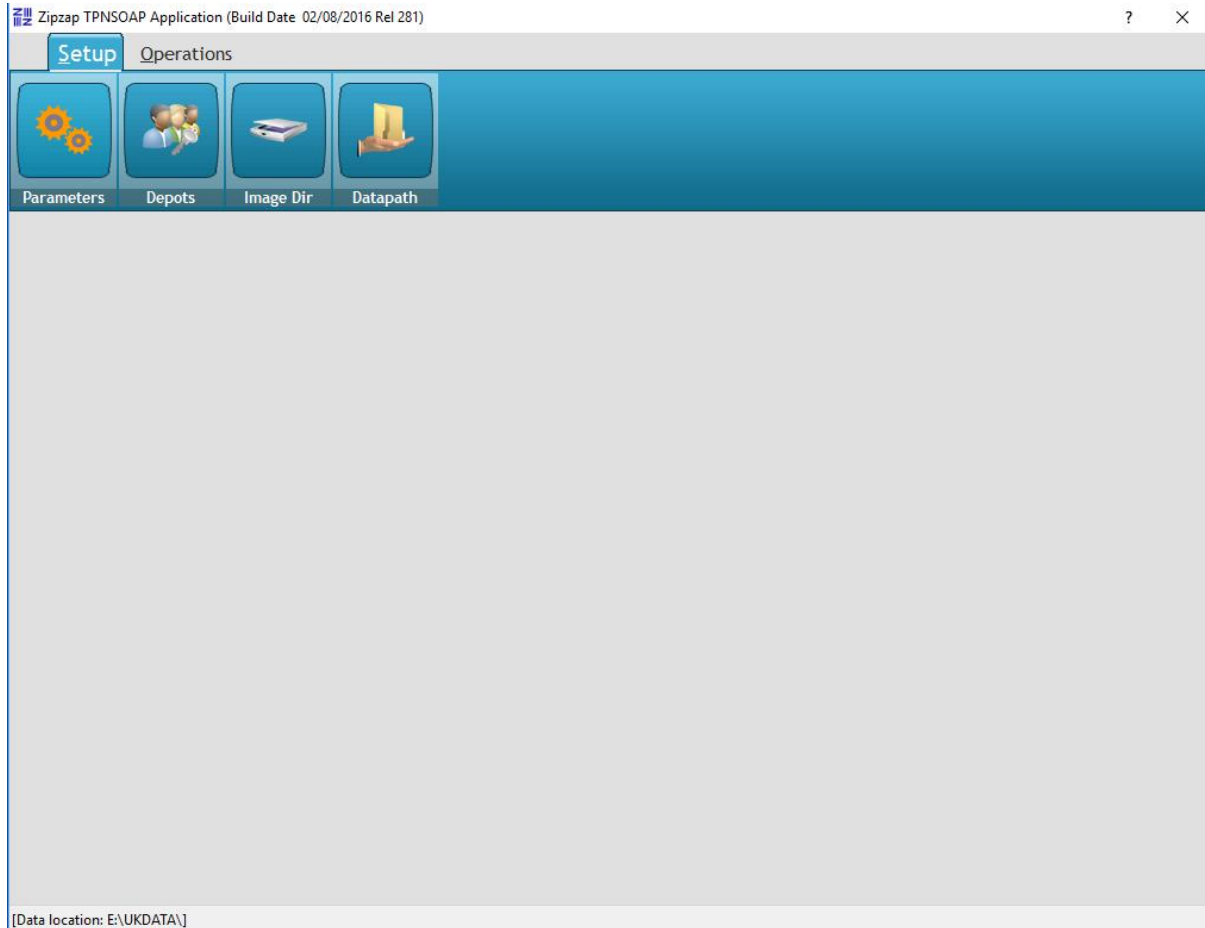


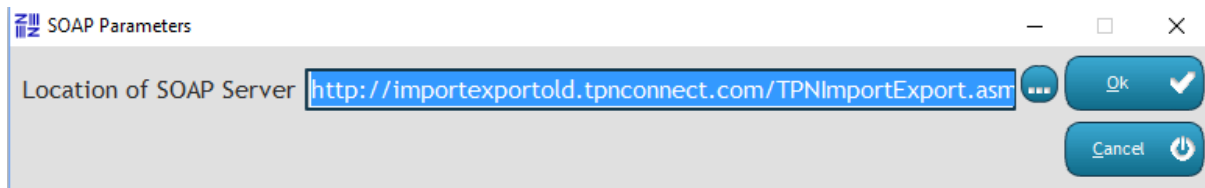
## TPN SOAP - installation

Install the program and set the values on the Setup option. This program has been updated to work with Windows 10 and Windows 10 security.

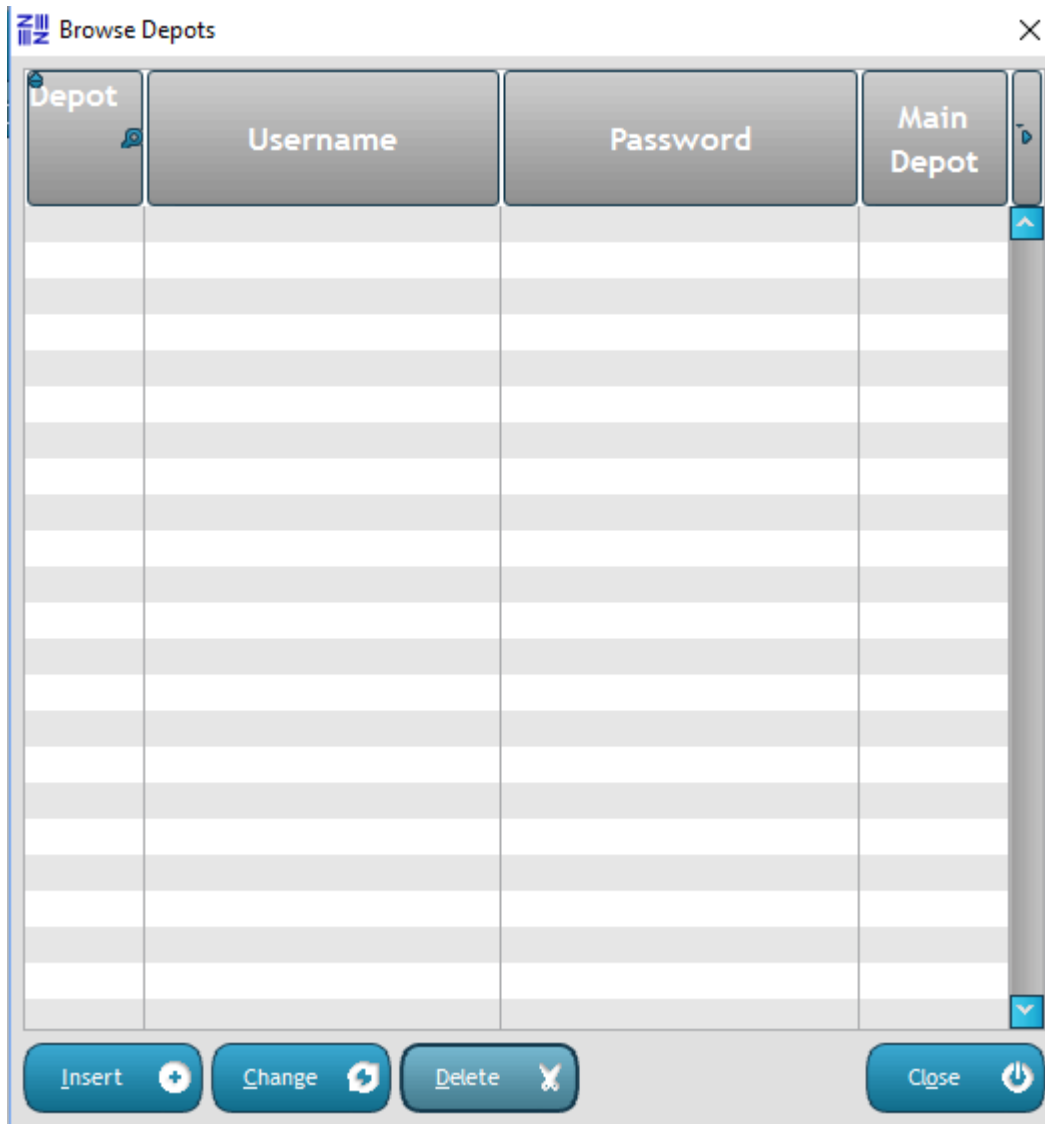
## TPN SOAP



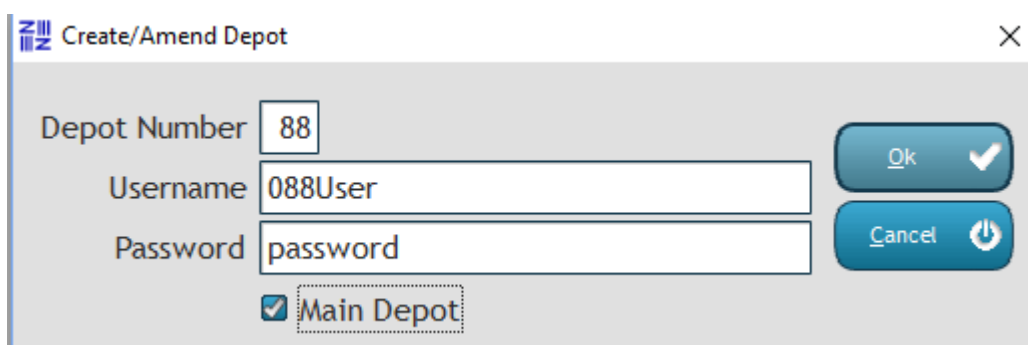
Go into **Parameters** and ensure the line is not blank. If it is then click on the [...] button and it will insert a line automatically.



Now go into **Depots**. This should contain details of the depots that you cover. Is this blank?



If so, click on Insert and complete the options.



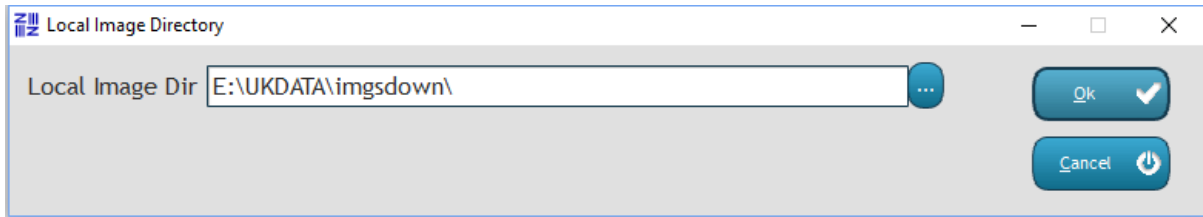
The username and password **MUST** be valid to log onto TPN Connect or it will not work.

If this is your main depot code then tick the Main Depot checkbox.

Click OK.

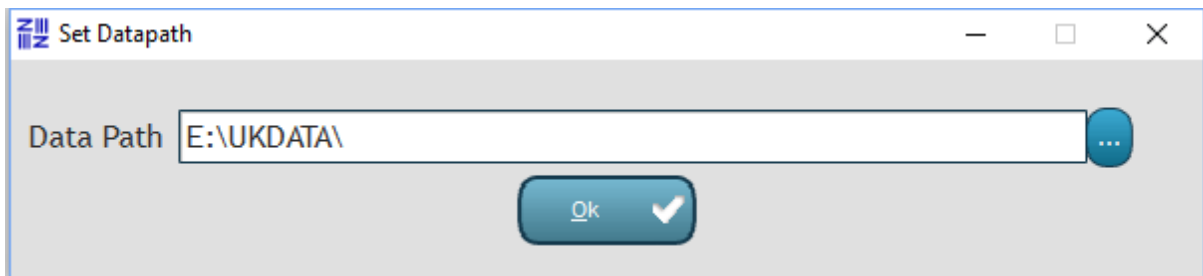
Now go into **Image Dir.**

This should point to the directory on your network where POD images are going to be stored. Note that this is normally a directory called `imgsdwn` which is under your data directory.



Now go into **Datapath.**

This is where your data files are located and is normally the same one that appears on the top line of TPN Invoicing.



After you have done this go into Operations and Data.

Ensure you tick WEB SERVICES at the bottom and OK.

If it is set up correctly then you should see the number incrementing at the bottom.

**Note: If your data directories are on another computer then you must have the appropriate Windows 'Rights' to create files in the locations that you have selected.**

## Changes

From Version 3.0 this screen has changed.

Retrieve Cons/Pods from TPN

Start Despatch Date

End Despatch Date

Retrieve CONS  Retrieve PODS  Images

Return based on Created Date or Despatch Date

Created  Despatched

TPN Connect will only search on Manifest Date and NOT Created Date using Web Services. If you hold freight until tomorrow and you want the Created Date returned on the records then you will need to add tomorrow in the date span. No duplication will occur.

Only for account  (leave BLANK for all)

Ignore account

Options

Special Instructions

From PC - To PC - Depot Ref

Blank

Retrieve ✓ Close

Enter the Start Date

Note: You can now Retrieve CONS, Retrieve PODS and now POD Images.

We noted that if you downloaded all POD images then at busy times you might not get them all. If you did it in quiet times then you did get them all.

We attributed this to the load being placed on the server at critical times.

Unless you specifically need the images then we suggest you do not download them.

Leave the two account boxes in the centre of the screen empty unless you need to use these options.

The Download method defaults to Web Services automatically.